

PLOTTING ELT BEARINGS USING THE IPAD



Provincial Training Officer's Conference
April 2016 – RCAF Station Trenton

DOWNLOAD STREET MAPS FOR YOUR SEARCH AREA

- ❖ *Just before your trip, while connected to the internet, view the Street Map you want to have available to you while searching.*
- ❖ *The Street Map you view will be saved into ForeFlight Mobile's temporary storage.*
- ❖ *This will allow you to access those Street Map views while travelling.*

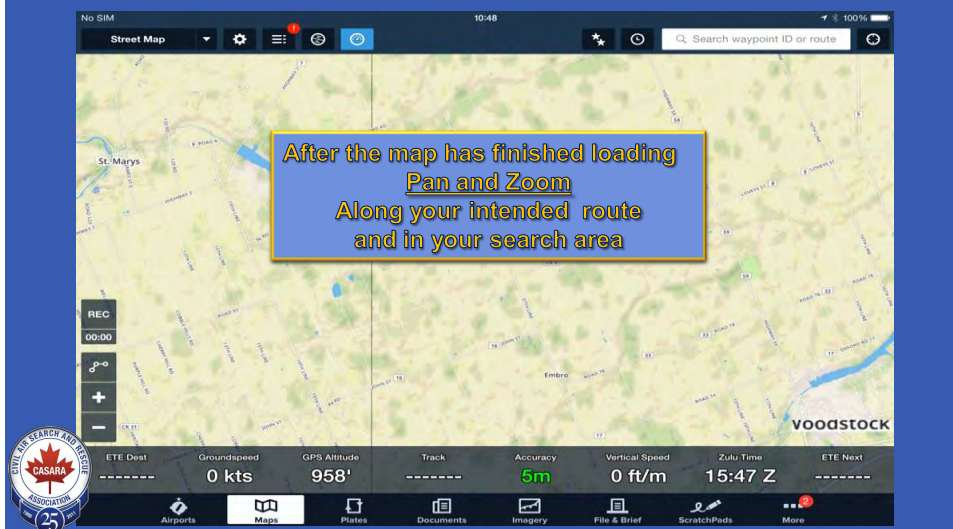


- ❖ *However, if you pan or zoom to an area that you didn't preview before your trip, there won't be any Street Map visible for those areas or zoom levels.*

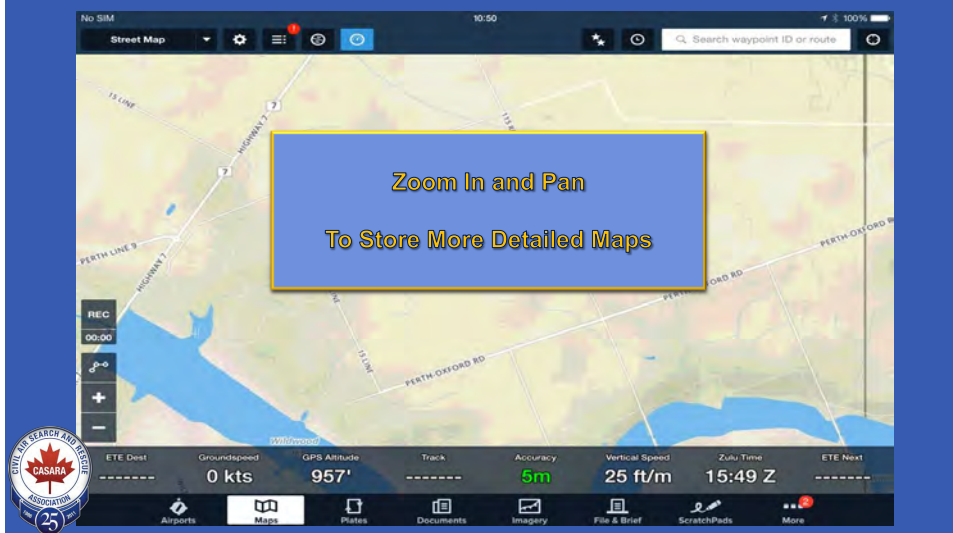
DOWNLOAD STREET MAPS FOR YOUR SEARCH AREA



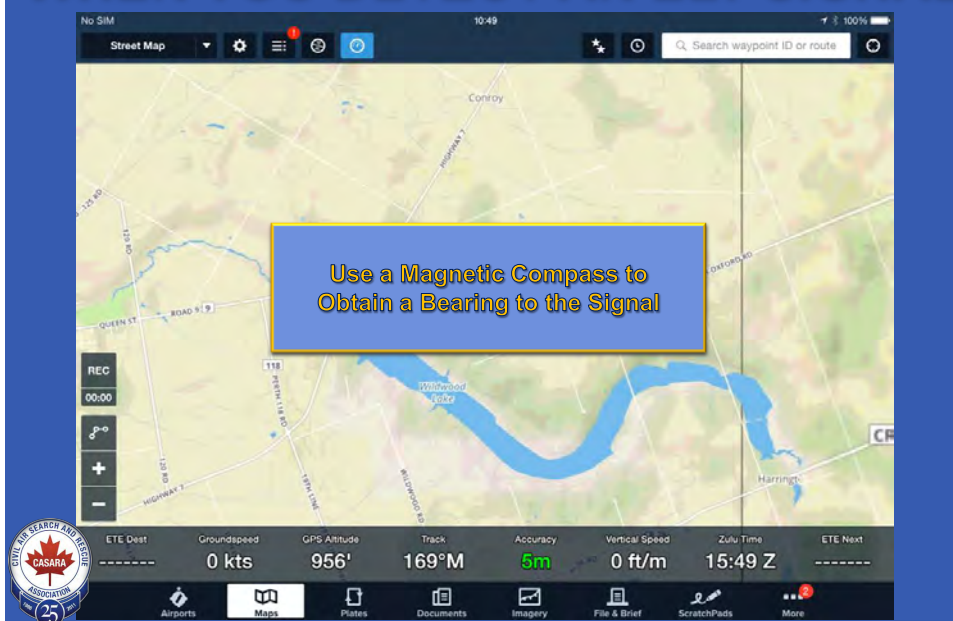
DOWNLOAD STREET MAPS FOR YOUR SEARCH AREA



DOWNLOAD STREET MAPS FOR YOUR SEARCH AREA

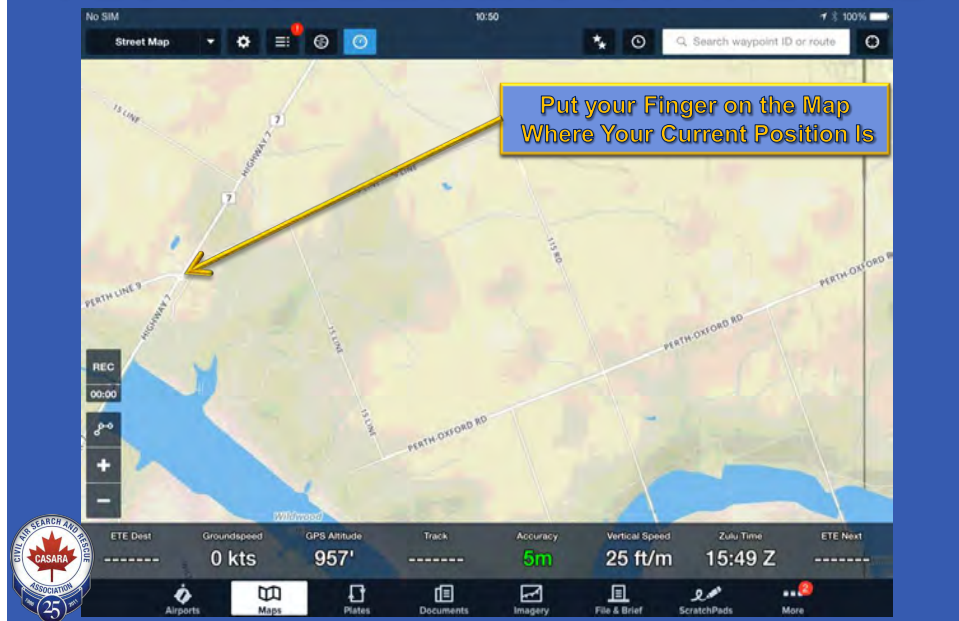


WHEN YOU DETECT AN ELT SIGNAL

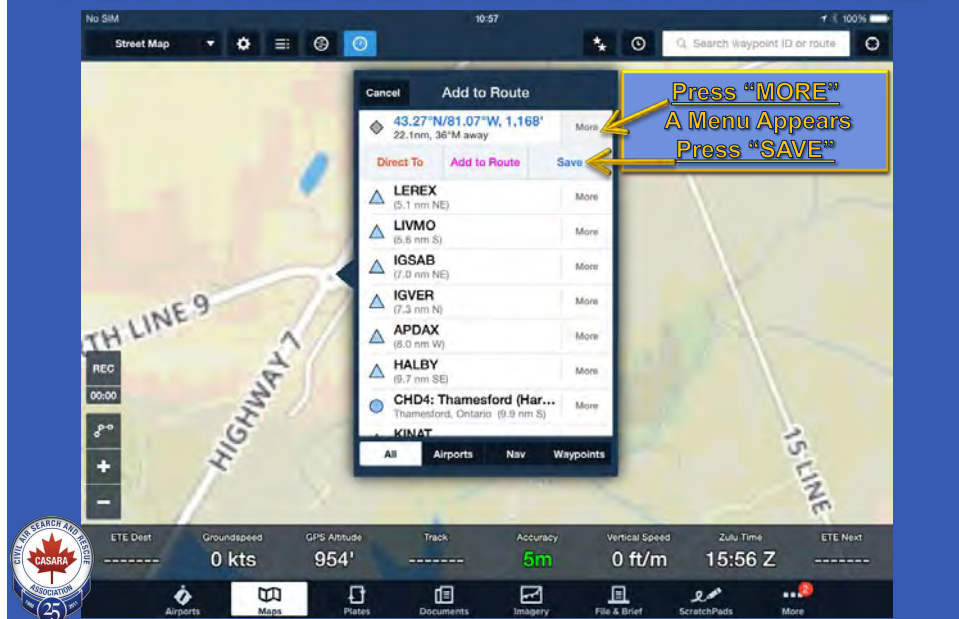


PLOTTING ELT BEARINGS ON THE IPAD

PLOT THE BEARING ON THE IPAD

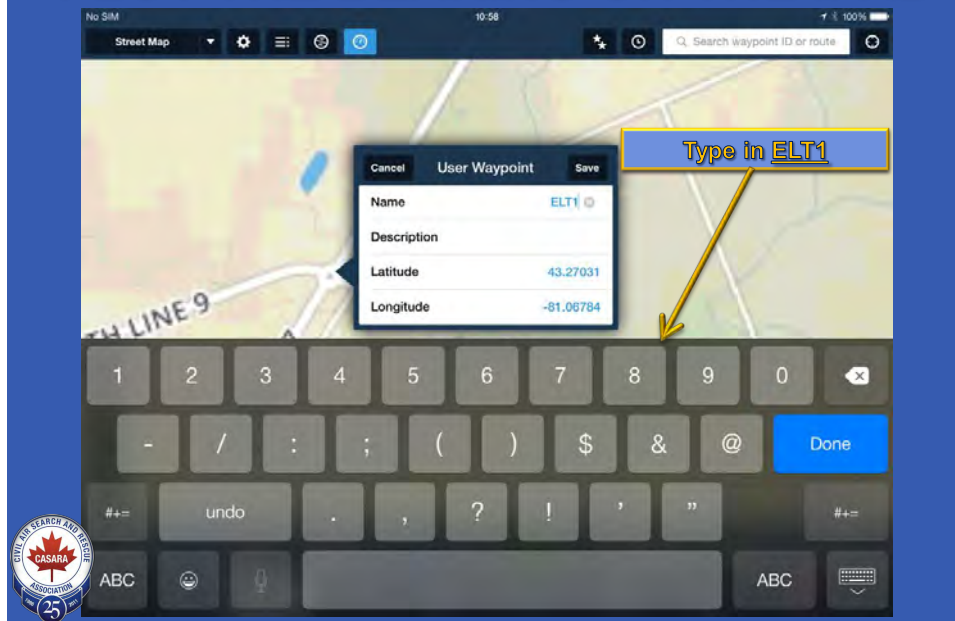


PLOT THE BEARING ON THE IPAD

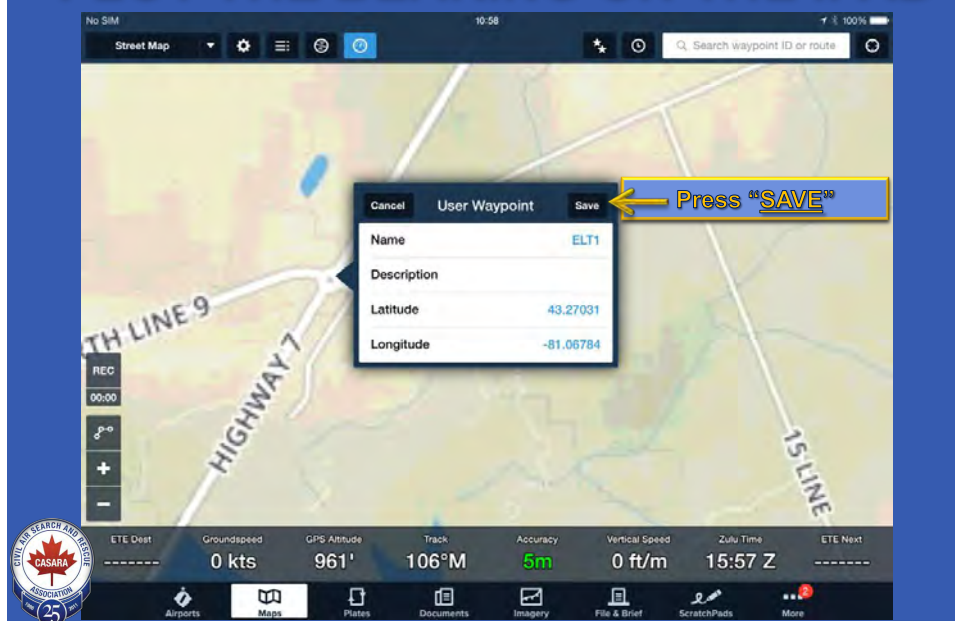


PLOTTING ELT BEARINGS ON THE IPAD

PLOT THE BEARING ON THE IPAD

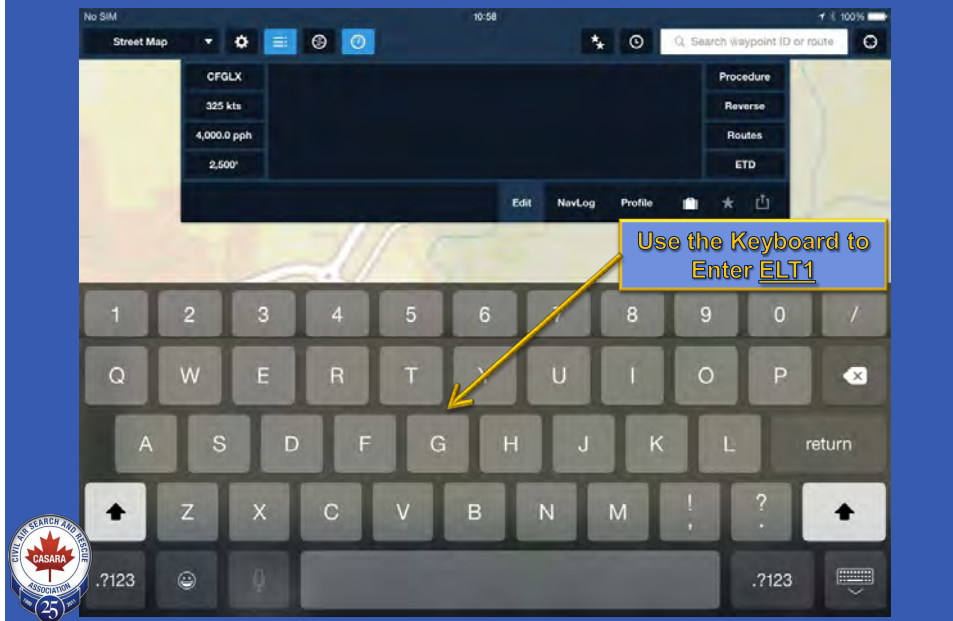


PLOT THE BEARING ON THE IPAD

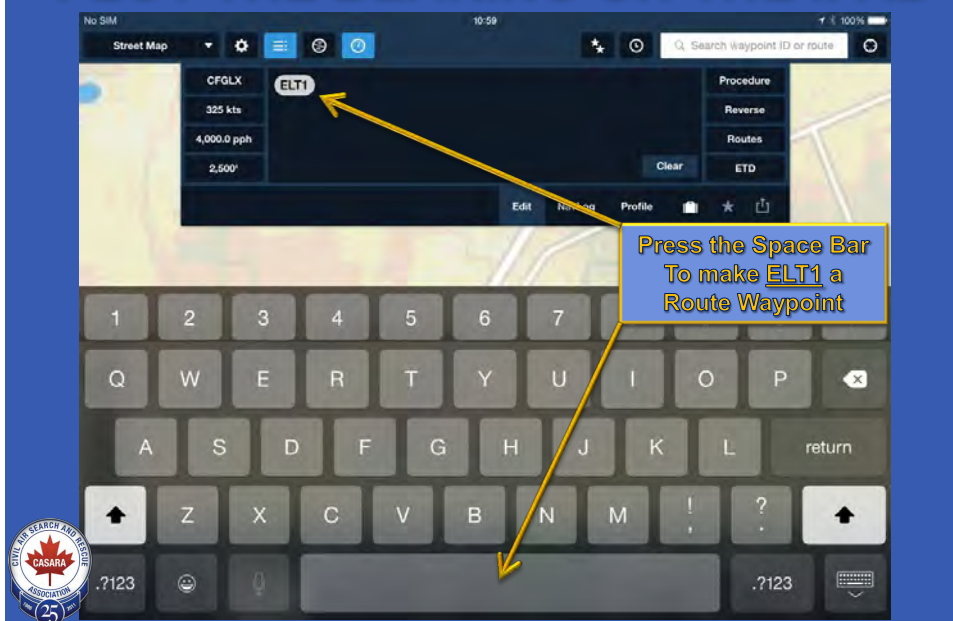


PLOTTING ELT BEARINGS ON THE IPAD

PLOT THE BEARING ON THE IPAD

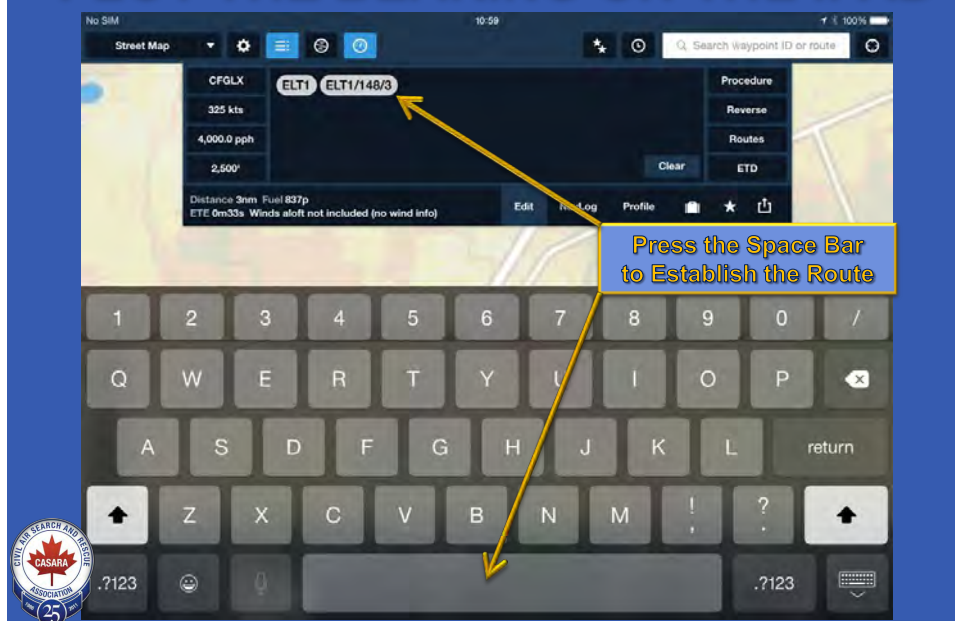
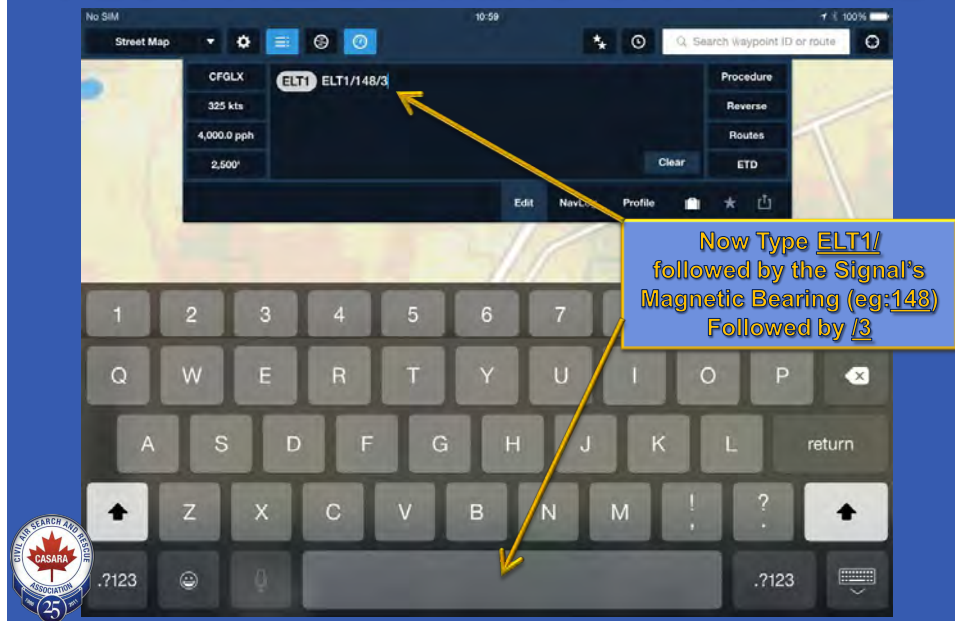


PLOT THE BEARING ON THE IPAD



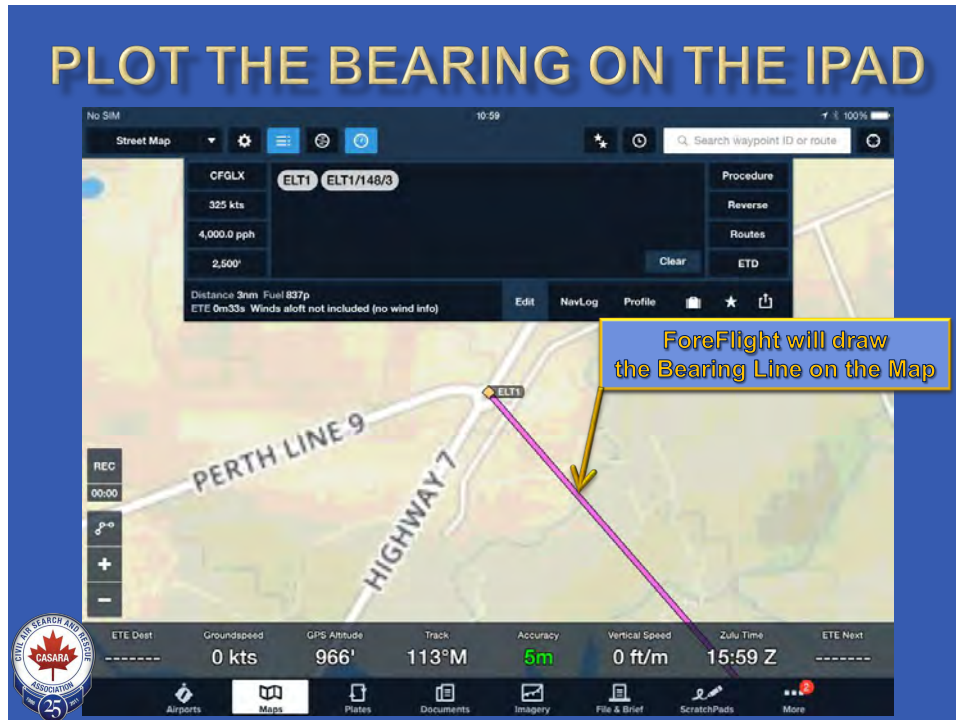
PLOTTING ELT BEARINGS ON THE IPAD

PLOT THE BEARING ON THE IPAD

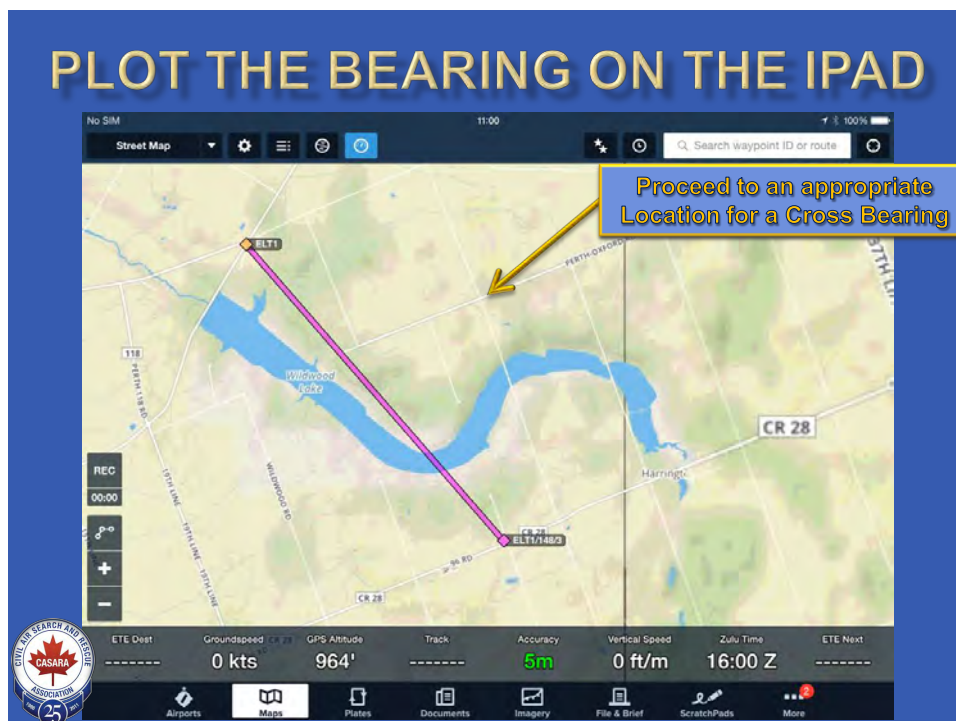


PLOTTING ELT BEARINGS ON THE IPAD

PLOT THE BEARING ON THE IPAD

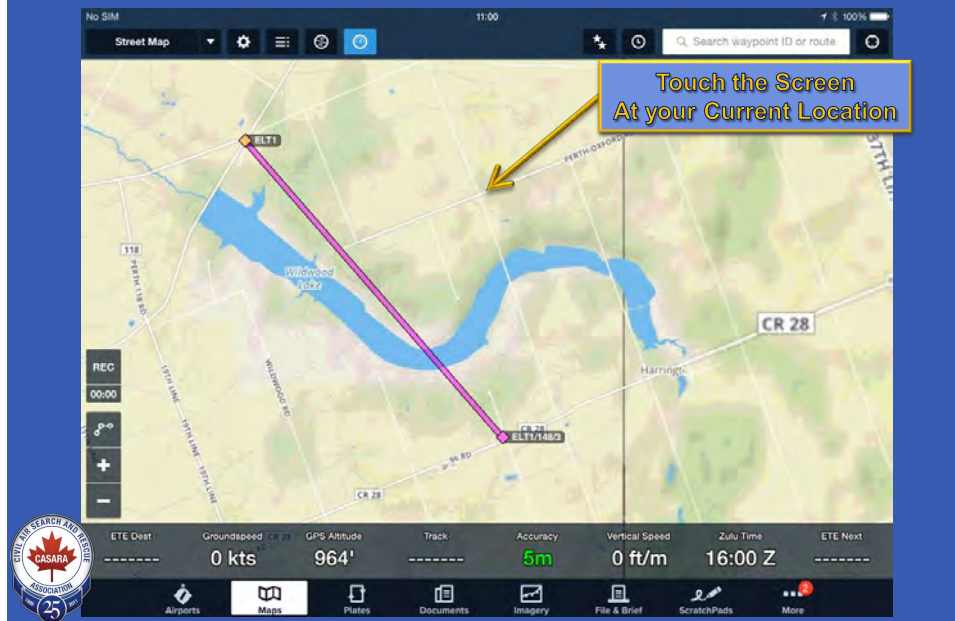


PLOT THE BEARING ON THE IPAD



PLOTTING ELT BEARINGS ON THE IPAD

PLOT THE BEARING ON THE IPAD



PLOT THE BEARING ON THE IPAD

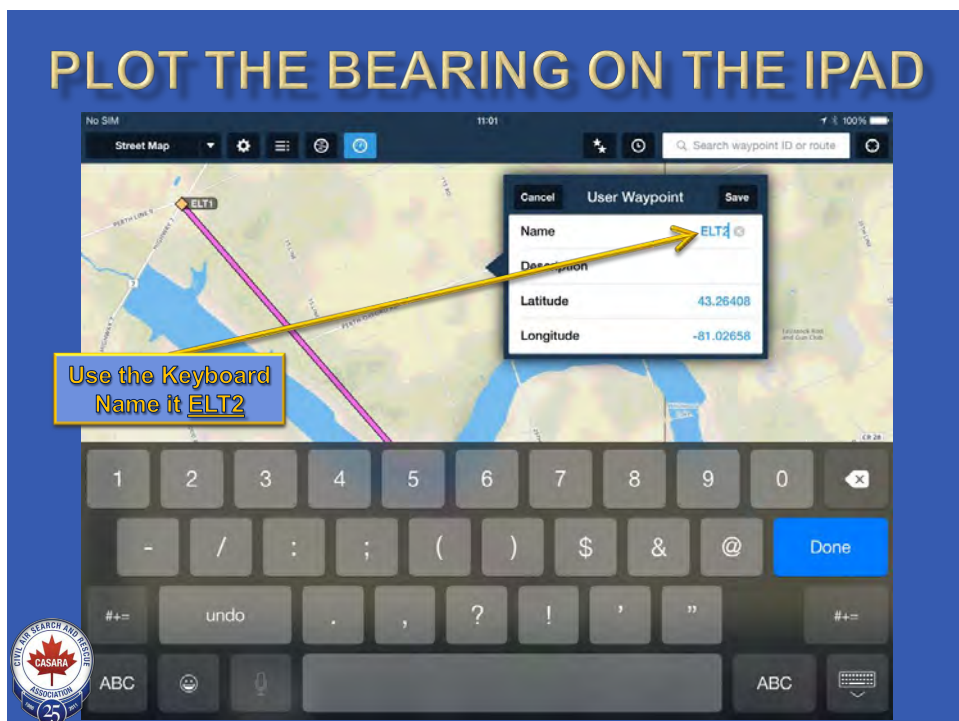


PLOTTING ELT BEARINGS ON THE IPAD

PLOT THE BEARING ON THE IPAD

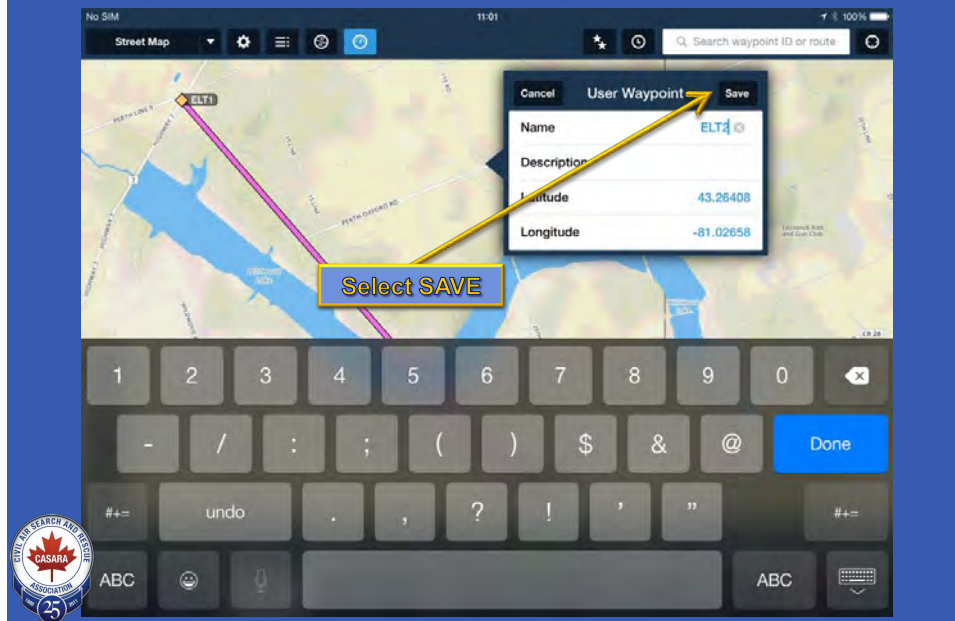


PLOT THE BEARING ON THE IPAD

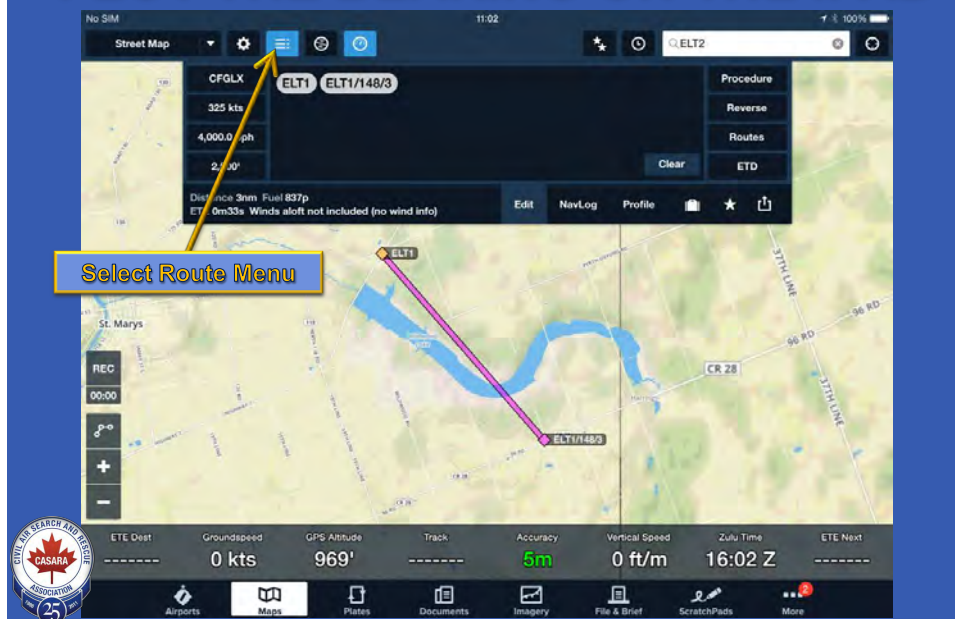


PLOTTING ELT BEARINGS ON THE IPAD

PLOT THE BEARING ON THE IPAD

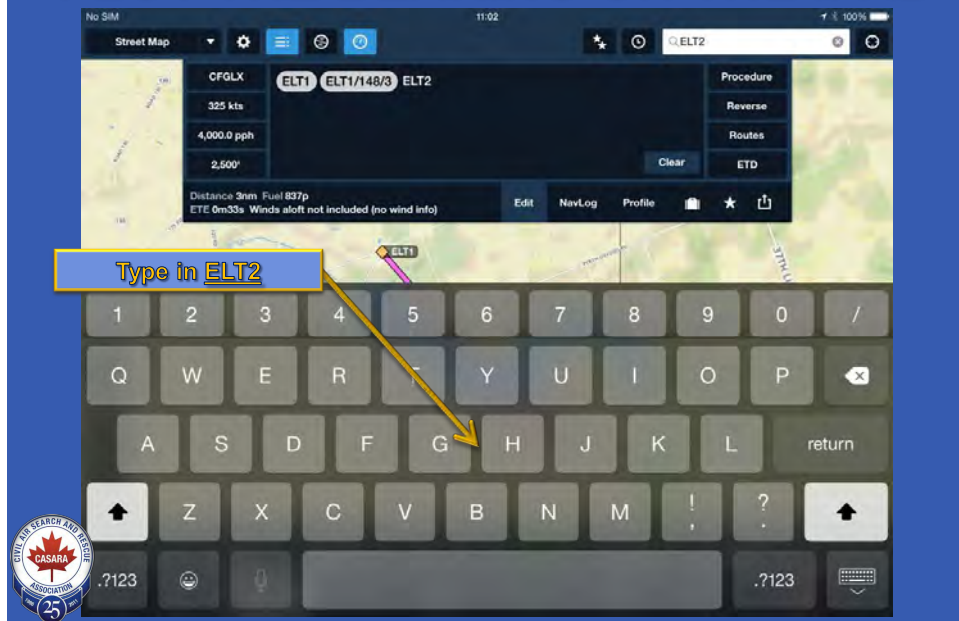


PLOT THE BEARING ON THE IPAD

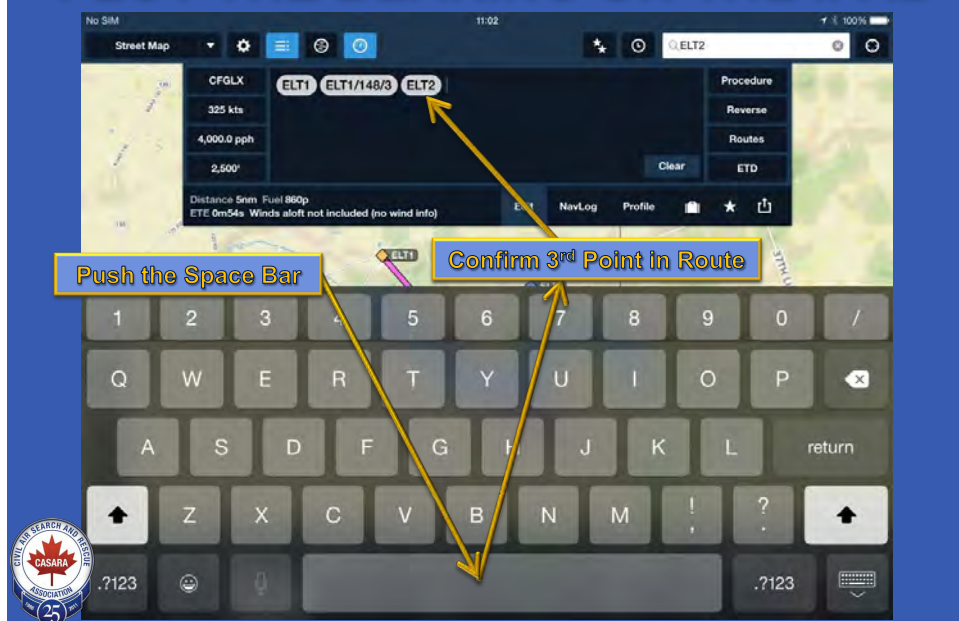


PLOTTING ELT BEARINGS ON THE IPAD

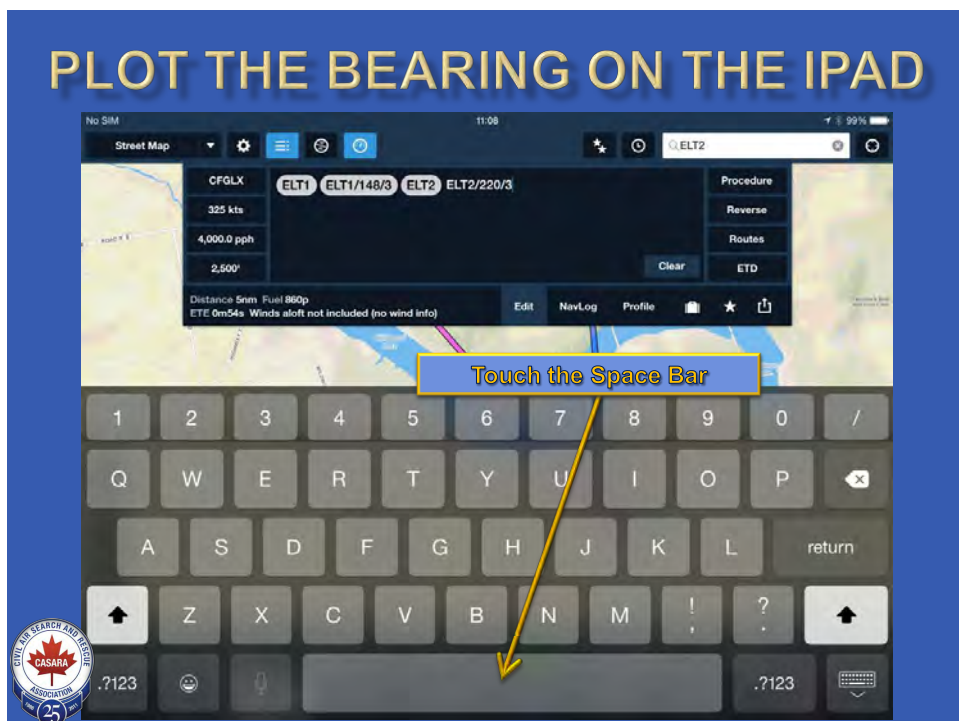
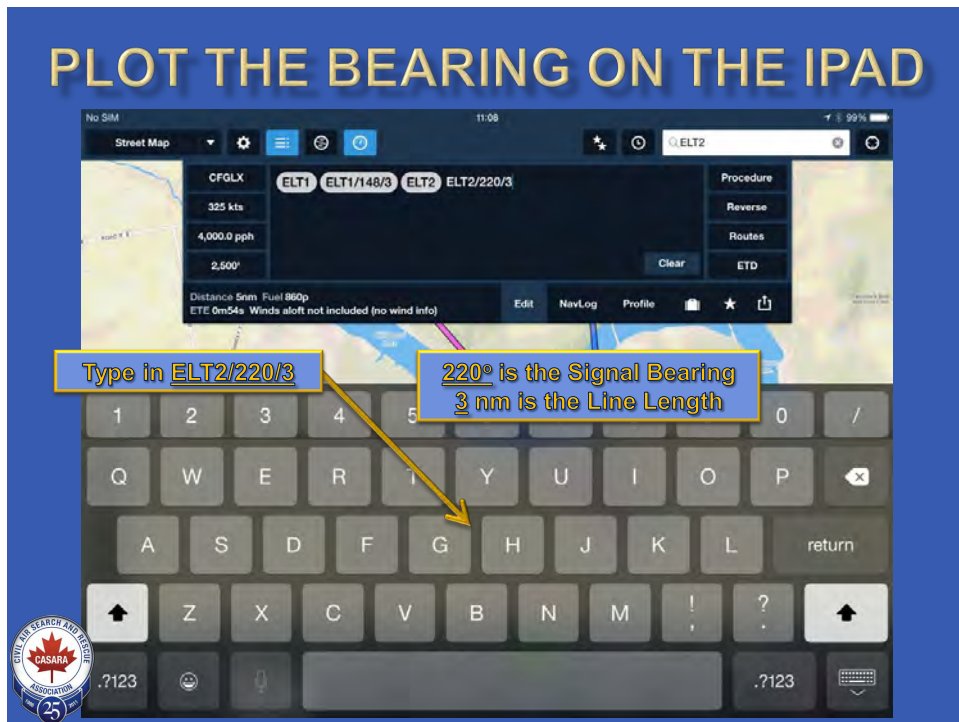
PLOT THE BEARING ON THE IPAD



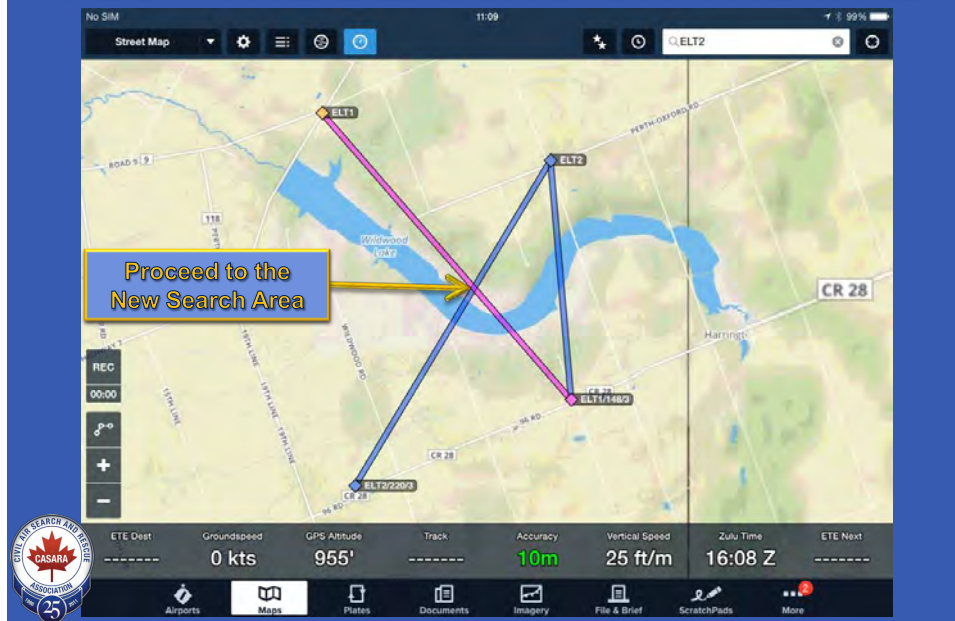
PLOT THE BEARING ON THE IPAD



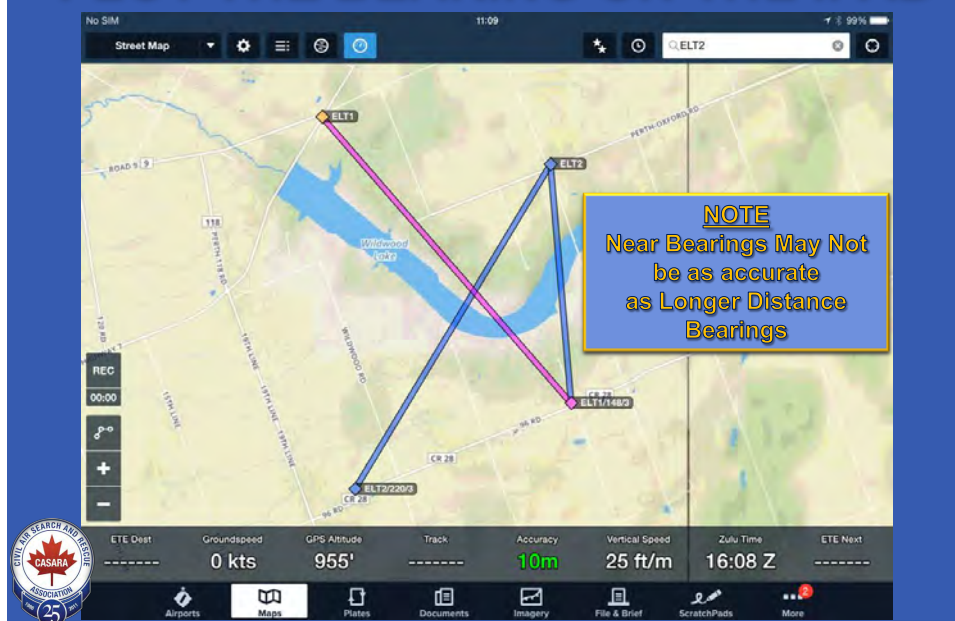
PLOTTING ELT BEARINGS ON THE IPAD



PLOT THE BEARING ON THE IPAD



PLOT THE BEARING ON THE IPAD



SUMMARY

- ❖ *Detect the Signal and Measure the Magnetic Bearing*
- ❖ *Enter Present Position as a 1st Waypoint (ELT1)*
- ❖ *Enter 2nd Waypoint Relative to the 1st (ELT1 / brg / dist)*
- ❖ *Proceed to a suitable 2nd Cross Bearing Reception Point*
- ❖ *Detect the Signal and Measure the Magnetic Bearing*
- ❖ *Enter Present Position as a 3rd Waypoint (ELT2)*
- ❖ *Enter 4th Waypoint Relative to the 3rd (ELT2 / brg / dist)*
- ❖ *Proceed to where the bearings cross*
- ❖ *or – Plot additional cross bearings as required*



PLOTTING ELT BEARINGS USING THE IPAD



REMEMBER – You MUST DOWNLOAD Street Maps
from the Internet BEFORE commencing an ELT Search

April - 2016